







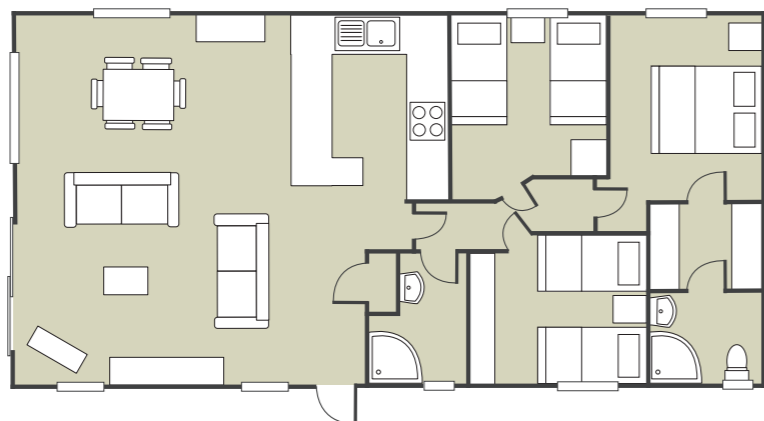
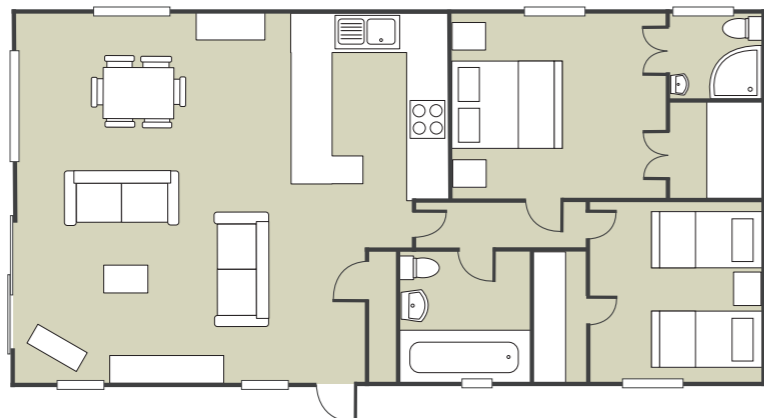
Key Features of this Holiday Home

- ✓ Spacious open plan layout and sliding patio doors
- ✓ Lobby seating to entry way
- ✓ USB charging points throughout
- ✓ Colour co-ordinated sofas, curtains and carpets
- ✓ Modern kitchen with integrated appliances, incl. 4-burner gas hob, oven, microwave and fridge-freezer
- ✓ Walk in wardrobe and full en-suite to master bedroom
- ✓ Large decking with stunning views
- ✓ Gas central heating and double glazing

Benefits of Ownership

-  Simple 'turnkey' holiday home ownership
-  NO stamp duty to pay
-  NO legal fees to pay
-  A range of financing options including equity release, part-exchange and hire purchase
-  Fully managed letting service available
-  Holiday at any time of year with no closed season

The Clearwater
40 x 20
2 Bedroom



The Clearwater
40 x 20
3 Bedroom

For more information, or to arrange your personal viewing appointment, please call Jeremy on 01726 843 425 or email: jeremy.reuben@swholidayparks.co.uk

Important notice: These particulars do not form part of any offer or contract and must not be relied upon as statements or representations of fact. Any areas, measurements or distances are approximate. The text, photographs and plans are for guidance only and are not necessarily comprehensive.

All accommodation at Seaview Gorran Haven is sold for HOLIDAY USE ONLY and must not be used as a primary place of residence. Evidence of a permanent address is required before purchasing and on-going annual checks of your permanent home address are a compulsory requirement of ownership.

South West
— HOLIDAY PARKS —

SEAVIEW

GORRAN HAVEN



The Clearwater

40 x 20 | 2 & 3 Bedrooms
Sealawns

southwestholidayparks.co.uk
01726 843 425

Welcome to The Clearwater

The Clearwater is one of those lodges that makes you look forward to coming back time after time, bringing the dream of lodge ownership well within reach.

The open plan lounge and dining area feels spacious and light with plenty of room to spread out, while the classic oak tones of the furniture blend wonderfully with the sumptuous texture of fabrics. Large sliding patio doors open out onto your outside space, perfect for al fresco dining.

At the heart of the home, the large contemporary kitchen has masses of workspace and storage along with high-quality integrated appliances which means you don't have to leave your stunning holiday home to feast like royalty.

The bedrooms carry through the beautiful oak tones from the lounge but it's the walk-in wardrobe and en-suite in the master bedroom which make this lodge stand out above the rest – a luxurious overhead shower awaits to soak any aching limbs after exploring the local area.

The Clearwater's classic styling, top quality features and open plan layout makes it one lodge not to be missed.



Lodge Location

Our charming Clearwater lodge is situated on our brand-new Sealawns development. With a large decking area, this luxury holiday home is perfect for taking in the beautiful unspoilt views of the South Cornwall coast. This holiday home also benefits from a double-parking space and a 12-month holiday season means it can be enjoyed at any time of the year.

Why Choose Seaview Gorran Haven?

Seaview Gorran Haven is surrounded by a patchwork of fields, interrupted by groves of trees and the deep blue of the ocean, making it the perfect location to escape from the hustle and bustle of everyday life.

Seaview's secluded location doesn't mean that you're cut off from the host of local attractions nearby however; you're spoilt for choice when it comes to exploring the beauty of Cornwall. Enjoy an early morning jog down to the sandy beaches of Hemmick, discover the Lost Gardens of Heligan, Caerhayes Castle and the world-famous Eden Project or spend a leisurely day exploring the stunning villages of Gorran Haven and Mevagissey just a short drive away.









As an Owner at Seaview, you'll also have full use of our five-star leisure facilities, including a heated outdoor swimming pool and dog-friendly park areas – so no matter the weather, you can enjoy your holiday home and its gorgeous location.



Your Holiday Home Includes

-  Delivery, siting and all utilities connected
-  All kitchen appliances
-  High-quality freestanding furniture
-  Digital TV aerial and satellite connection
-  Manufacturer's Warranty
-  Large, low maintenance decking with glass front

Park Features & Benefits

-  5* Visit England graded park
-  Full 12-month holiday season
-  Stunning sea views
-  Outdoor heated swimming pool
-  Children's play areas
-  Complimentary golf at Carlyon Bay
-  Close to the South West Coast Path and beautiful sandy beaches
-  Free and unlimited hi-speed WIFI

