

Key Features of this Holiday Home

- ✓ Large bay window and feature fireplace
- ✓ Spacious utility room on entry
- ✓ Colour co-ordinated sofas, curtains and carpets
- ✓ Fully fitted kitchen with high-quality integrated appliances, inc. 4-burner gas hob, oven, microwave, fridge/freezer and dual washer/dryer
- ✓ Dining table including high-backed chairs
- ✓ En-suite and walk-in wardrobe to master bedroom
- ✓ Gas central heating
- ✓ Double glazing
- ✓ Built to BS3632 specifications

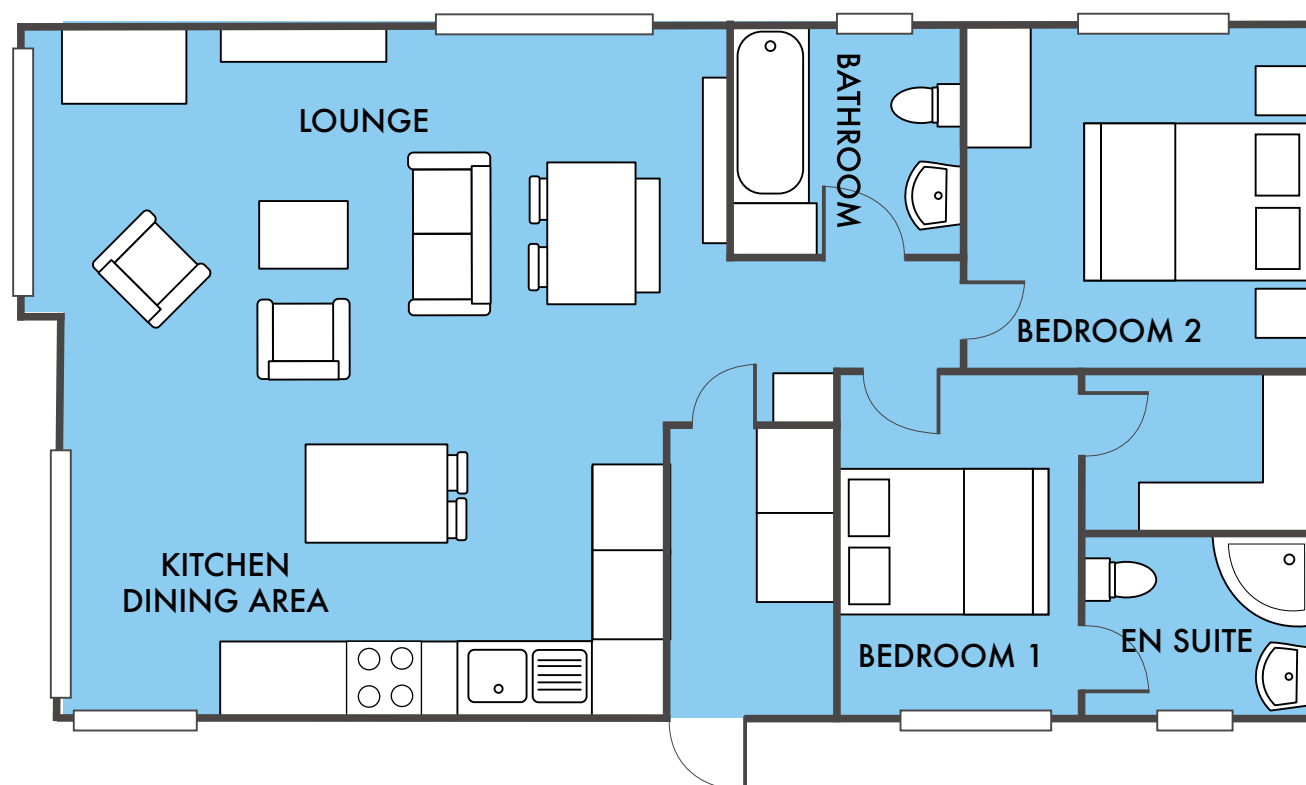
Benefits of ownership

- ✓ Simple 'turnkey' holiday home ownership
- ✓ NO stamp duty to pay
- ✓ NO legal fees to pay
- ✓ A range of financing options including equity release, property part-exchange and Black Horse finance
- ✓ Fully managed letting service available
- ✓ Holiday at any time of year with no closed season



Willerby Pinehurst

40 X 20 | 2 BEDROOMS
BAYVIEW



WILLERBY PINEHURST | 40 X 20 | 2 BEDROOMS

For more information, or to arrange your personal viewing appointment,
please call Jeremy on **01726 843425**
or email: jeremy.reuben@swholidayparks.co.uk

Important notice: These particulars do not form part of any offer or contract and must not be relied upon as statements or representations of fact. Any areas, measurements or distances are approximate. The text, photographs and plans are for guidance only and are not necessarily comprehensive.

All accommodation at Seaview Gorran Haven is sold for HOLIDAY USE ONLY and must not be used as a primary place of residence. Evidence of a permanent address is required before purchasing and on-going annual checks of your permanent home address are a compulsory requirement of ownership.



southwestholidayparks.co.uk
01726 843425

Your holiday home includes

- ✓ Delivery, siting and all utilities connected
- ✓ All kitchen appliances
- ✓ High-quality freestanding furniture
- ✓ Digital TV aerial and satellite connection
- ✓ Manufacturer's Warranty
- ✓ Spacious, low maintenance decking

Park features & benefits

- ✓ 5* Visit England graded park
- ✓ Full 12-month holiday season
- ✓ Stunning sea views
- ✓ Outdoor heated swimming pool
- ✓ Children's play areas
- ✓ Complimentary golf at Carlyn Bay



Why Choose Seaview Gorran Haven

Seaview Gorran Haven is surrounded by patchworks of fields, groves of trees and the deep blue of the ocean, making it the perfect location to escape from the hustle and bustle of everyday life.

Seaview's secluded location doesn't mean that you're cut off from the host of attractions nearby however; you're spoilt for choice when it comes exploring the beauty of Cornwall with the stunning villages of Gorran Haven and Mevagissey just a short drive away. If you wanted something a little more active, get your heart racing by paddle boarding or kayaking on the beautiful coastline that's right on our doorstep.



As an Owner at Seaview, you'll also have full use of our five-star leisure facilities, including a heated outdoor swimming pool, tennis and badminton courts and dog-friendly park areas – so no matter the weather, you can enjoy your holiday home and its gorgeous location.



Welcome to the Pinehurst

Brand-new for 2020 with a stunningly fresh colour scheme, the Pinehurst captures modern practical living with an exceptionally well thought out design.

Entering through the spacious utility room, you follow through to the large open plan living area with a wide feature bay window – allowing an abundance of light and space to fill the room, as well as making the most of the stunning sea views. Soft fabrics and textures flow throughout, offering the very best in home from home comforts.

The contemporary styled kitchen with pendant lighting and hard-wearing parquet flooring features high-quality integrated appliances, including a double larder and beautiful central island unit with extra storage that doubles as a breakfast bar – perfect for hosting family and friends at any time of year.

Generously spacious bedrooms come complete with freestanding furniture and king-sized beds, with a walk-in wardrobe and shower en-suite to the master suite: no compromises have been made when it comes to comfort or style in this striking holiday home.

The Lodge Location

Our popular Pinehurst Lodge is sited on an enviable sea-facing plot within our brand-new Bayview development. With an extra-large decking area complete with glass balustrading, this holiday lodge is perfect for soaking in the beautiful views of the Roseland Peninsula and the stunning Cornish sunsets. The Pinehurst also benefits from a double-parking space and our 12-month holiday season means it can be enjoyed at any time of the year.

