

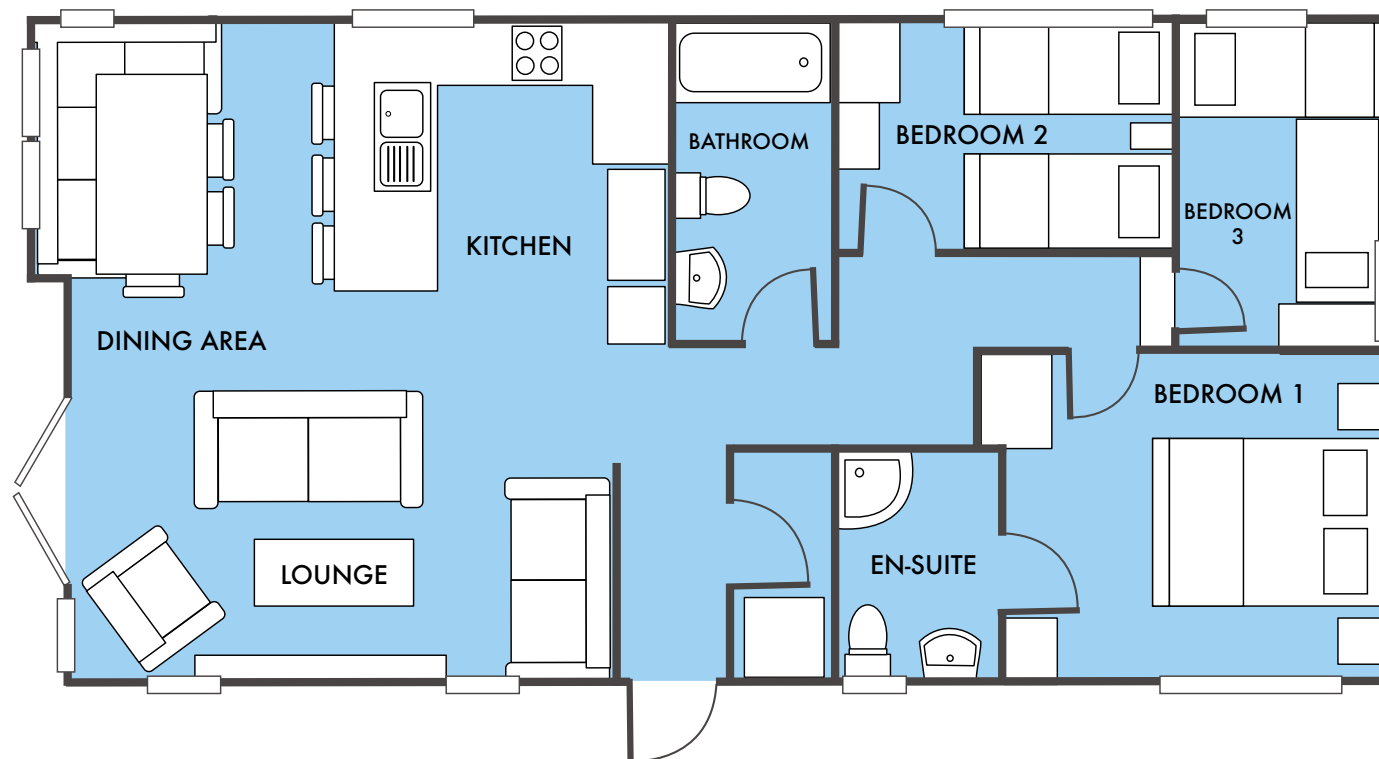


Key Features of this Holiday Home

- ✓ Spacious open plan layout and French doors
- ✓ Colour co-ordinated sofas, curtains and carpets
- ✓ Stunningly modern shaker-style kitchen
- ✓ Integrated appliances, incl. 4-burner gas hob, oven, fridge-freezer, dishwasher & dual washer/dryer
- ✓ Shower en-suite to master bedroom
- ✓ Large decking with stunning views
- ✓ Gas central heating and double glazing

Benefits of Ownership

- ✓ Simple 'turnkey' holiday home ownership
- ✓ NO stamp duty to pay
- ✓ NO legal fees to pay
- ✓ A range of financing options including equity release, property part-exchange and Black Horse finance
- ✓ Fully managed letting service available
- ✓ Holiday at any time of year with no closed season



THE TORONTO | 42 X 20 | 3 BEDROOM

For more information, or to arrange your personal viewing appointment, please call Jeremy on **01726 843425** or email: jeremy.reuben@swholidayparks.co.uk

Important notice: These particulars do not form part of any offer or contract and must not be relied upon as statements or representations of fact. Any areas, measurements or distances are approximate. The text, photographs and plans are for guidance only and are not necessarily comprehensive.

All accommodation at Seaview Gorran Haven is sold for HOLIDAY USE ONLY and must not be used as a primary place of residence. Evidence of a permanent address is required before purchasing and on-going annual checks of your permanent home address are a compulsory requirement of ownership.



The Toronto

42 X 20 | 3 BEDROOM
SEALAWNS



southwestholidayparks.co.uk
01726 843425

Your Holiday Home Includes

- ✓ Delivery, siting and all utilities connected
- ✓ All kitchen appliances
- ✓ High-quality freestanding furniture
- ✓ Digital TV aerial and satellite connection
- ✓ Manufacturer's Warranty
- ✓ Spacious, low maintenance decking

Park Features & Benefits

- ✓ 5* Visit England graded park
- ✓ Full 12-month holiday season
- ✓ Stunning sea views
- ✓ Outdoor heated swimming pool
- ✓ Children's play areas
- ✓ Complimentary golf at Carlyon Bay
- ✓ Close to the South West Coast Path and beautiful, sandy beaches



Why Choose Seaview Gorran Haven?

Seaview Gorran Haven is surrounded by a patchwork of fields, interrupted by groves of trees and the deep blue of the ocean, making it the perfect location to escape from the hustle and bustle of everyday life.

Seaview's secluded location doesn't mean that you're cut off from the host of local attractions nearby however; you're spoilt for choice when it comes to exploring the beauty of Cornwall. Enjoy an early morning jog down to the sandy beaches of Hemmick, discover the Lost Gardens of Heligan, Caerhayes Castle and the world-famous Eden Project or spend a leisurely day exploring the stunning villages of Gorran Haven and Mevagissey just a short drive away.



As an Owner at Seaview, you'll also have full use of our five-star leisure facilities, including a heated outdoor swimming pool and dog-friendly park areas – so no matter the weather, you can enjoy your holiday home and its gorgeous location.



Welcome to the Toronto

Brand-new to Seaview Gorran Haven, the Toronto lodge is the epitome of luxurious family living with a fresh interior and two spacious bedrooms. Arriving on our new Sealawns development, the Toronto boasts a friendly, welcoming ambience offset by serene grey accents throughout.

The dining area features a large wraparound dining suite that leads to a timeless shaker-style kitchen area and a contemporary breakfast bar – making it the perfect space for enjoying some much-needed family time. The open-plan lounge is bright with bold blue tones, modern light oak furnishings and French doors that open out onto spacious composite decking, ideal for taking in the idyllic sea views.

The contemporary colour scheme follows through into three spacious bedrooms, with a king-size ottoman bed in the master, twin beds in the second bedroom and a cleverly planned out third bedroom with built-in bunk beds, ensuring that you can comfortably accommodate up to seven people. The master bedroom also benefits from a bright and well-sized en-suite shower room.

Creating the perfect family getaway from everyday life, you don't want to miss out on the Toronto lodge.

The Lodge Location

Our beautiful Toronto lodge is situated on our brand-new Sealawns development. With a large decking area, this luxury holiday home is perfect for taking in the beautiful unspoilt views of the South Cornwall coast. This holiday home also benefits from a double-parking space and a 12-month holiday season means it can be enjoyed at any time of the year.

