



The Geneva

42 X 20 | 3 BEDROOMS
OCEAN DRIVE



Your holiday home includes

- ✓ Delivery, siting and all utilities connected
- ✓ All kitchen appliances
- ✓ High-quality freestanding furniture
- ✓ Digital TV aerial and satellite connection
- ✓ Manufacturer's Warranty
- ✓ Spacious, low maintenance decking

Park features & benefits

- ✓ 5* Visit England graded park
- ✓ Full 12-month holiday season
- ✓ Stunning sea views
- ✓ The Bucket & Spade bar, café and restaurant
- ✓ Drift beauty & wellness suite
- ✓ Indoor heated swimming pool
- ✓ Fully equipped gymnasium
- ✓ Complimentary golf at Teignmouth Golf Club



Why Choose Coast View

Situated on a hilltop, Coast View offers spectacular, uninterrupted views of the Jurassic Coast, peppered with luxury yachts and motorboats – making it the perfect place to unwind.

Nestled within the charming fishing village of Shaldon, you can treat yourself to some of the finest local wine-bars and restaurants that the West Country has to offer. A bit further afield, it's just a short drive to a host of attractions in nearby Dartmoor, Exeter and Torquay, so you can spend your time away discovering everything the Devon countryside and coast has to offer.



As an Owner at Coast View, you'll also have full use of our five-star leisure facilities, including a heated indoor swimming pool, fully equipped gym and Drift Beauty & Wellness Suite, as well as indulge in delicious dining at our on-site bar, café and restaurant *The Bucket & Spade* – so no matter the weather, you can enjoy your holiday home and its gorgeous location.





Welcome to The Geneva

On entering The Geneva, a striking shuttered concrete effect wall is set behind a low bench, next to a work-of-art A-frame wood and metal shelving unit. Flowing into the lounge a large family friendly corner sofa suite - and "uber-modern" grey swivel chair - beckons you to recline in front of the floating two-tone grey and oak media unit equipped with an integrated Bluetooth enabled speaker. A modern pebble effect electric wall fire between an LED-lit wall hung bookcase and another concrete effect feature wall adds to the sleek and refined finish.

The open plan kitchen and dining area holds the same contemporary feel with a beautiful oak lined dining table top on grey tapered legs and plush dining chairs. These complement the solidly constructed bar stools that flank the thin profile carbonised effect worktop on the kitchen island that houses a stylish cast integrated 5-burner hob with cast iron supports and is surrounded by gentle grey and white handle-less doors encasing a plethora of integrated appliances.

The well-proportioned bedrooms offer class and comfort in spades! Gorgeous European designed bedroom furniture and stylish header walls punctuate every room with its own theme. The bathroom and en-suite deliver on all levels too with floating vanity wall units and beautifully crafted taps and showers.

The Lodge Location

Our beautiful Geneva Lodge is situated on an enviable plot on our Ocean Drive development. With a large decking area complete with glass balustrading, this luxury lodge is perfect for soaking up the unrivalled views of Teignmouth harbour and the Jurassic Coast. The Geneva also benefits for a double-parking space and our 12-month holiday season means it can be enjoyed at any time of the year.

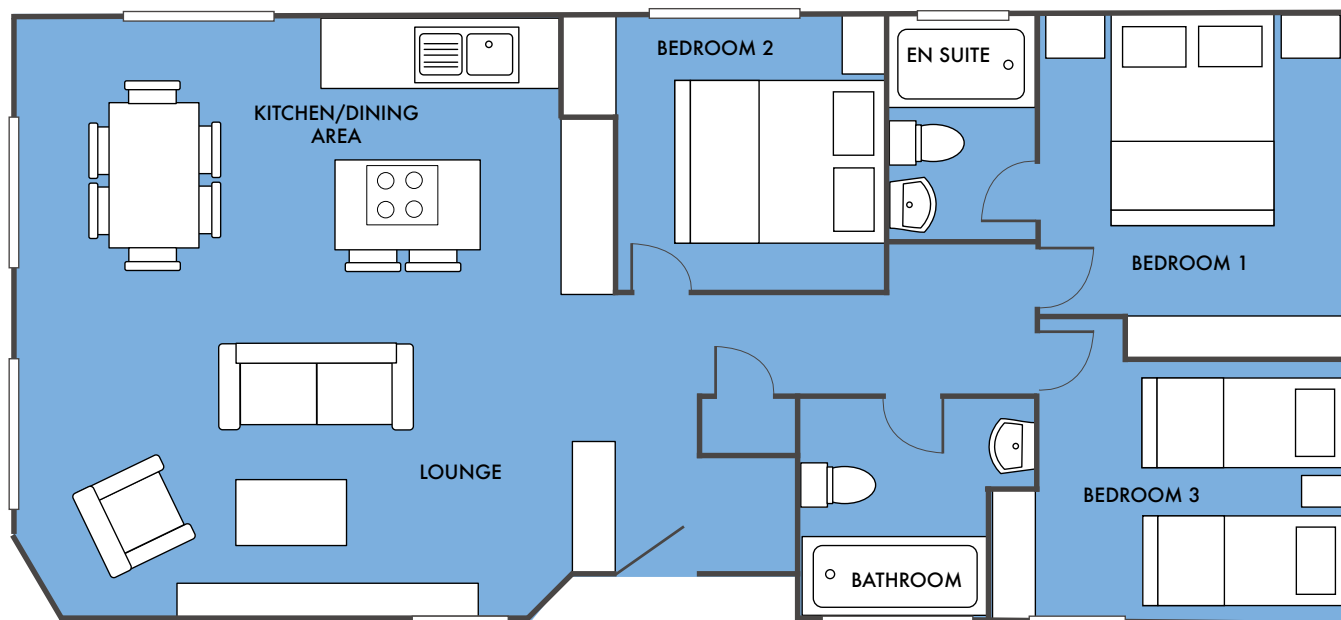


Key Features of this Holiday Home

- ✓ Modern interior styling
- ✓ Fully fitted modern kitchen with integrated appliances inc. 5-burner gas hob, oven, fridge/freezer and dishwasher
- ✓ Dining table including 4 chairs
- ✓ Spacious en-suite in master bedroom
- ✓ Large decking
- ✓ Gas central heating
- ✓ Built to BS3632 specifications

Benefits of ownership

- ✓ Simple 'turnkey' holiday home ownership
- ✓ NO stamp duty to pay
- ✓ NO legal fees to pay
- ✓ A range of financing options including equity release, property part-exchange and Black Horse finance
- ✓ Fully managed letting service available
- ✓ Holiday at any time of year with no closed season



THE GENEVA | 42 X 20 | 3 BEDROOMS

For all enquiries, call **01626 818250**
or email: **shah.rahman@swholidayparks.co.uk**

Important notice: These particulars do not form part of any offer or contract and must not be relied upon as statements or representations of fact. Any areas, measurements or distances are approximate. The text, photographs and plans are for guidance only and are not necessarily comprehensive.

All accommodation at Coast View is sold for HOLIDAY USE ONLY and must not be used as a primary place of residence. Evidence of a permanent address is required before purchasing and on-going annual checks of your permanent home address are a compulsory requirement of ownership.

